



MANUFACTURERS AND SUPPLIERS OF
FERROUS & NON FERROUS
CASTING & MACHINED COMPONENTS

HIGH PERFORMANCE

HIGH QUALITY



*Committed to
High Quality Castings...*



<https://www.srk-industries.com>



ABOUT US

“ Full-Service Sand Casting Manufacturer: Foundry, Pattern Shop, Machine Shop & Technologies ”

SRK Industries is a full service ISO 9001: 2015 certified company, a sister concern of SPB Group, Coimbatore spearheaded by **Mrs. S.Ranjani D/o Mr. S. Palanisamy, Chairman and Managing Director of SPB Group of Companies**, a family owned and operated sand casting manufacture Foundry , Pattern shop and Machine Shop



Our Ferrous Foundry is capable of manufacturing steel castings in carbon, low alloy, stainless and duplex steel grades for valve, pump, Earthmoving equipments, automobile and engineering industry. We have the capacity to produce castings conforming to international specifications, ranging from 20 kg to 2500 kg maximum single piece weight the annual capacity of the plant is 2400 MT

We provide custom made solutions as per customer requirements in addition to undertaking of sophisticated casting and machining of heavy components. It has always been our endeavour to provide our customers with all their requirements under one roof. This has been made possible by means of our state of art foundries and a modern machine shop

A pattern shop and machine shop are part of our fully integrated facilities. We take pride in our great technical ability to provide cutting edge castings. To retain our reputation as a world class casting manufacturer, we are actively reinvesting and upgrading equipment and technology.

Why SRK INDUSTRIES



Why Does A Customer Choose "SRK"?

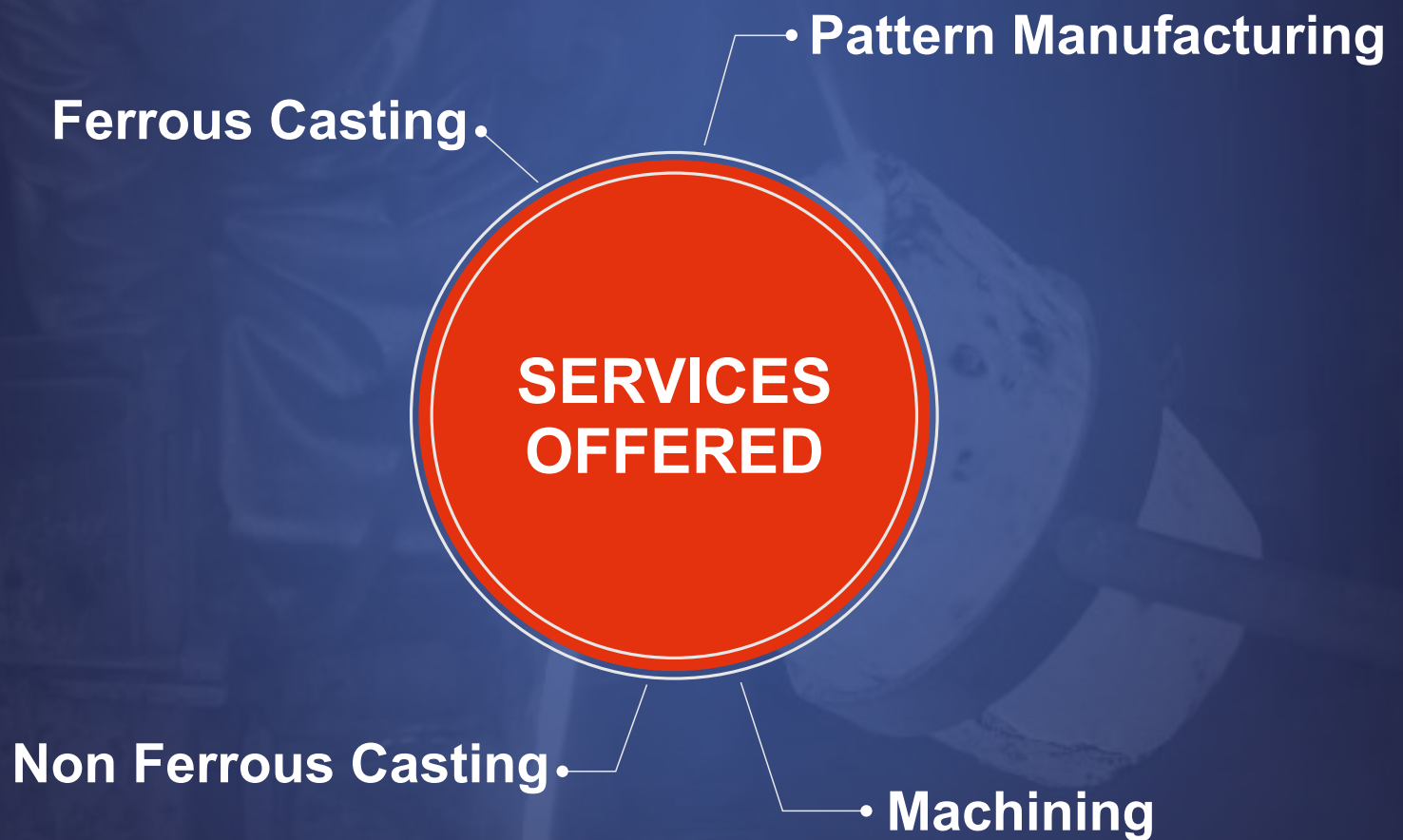
- ⦿ Customers will get all of their needs met under one roof.
- ⦿ Customer can receive a finished product at a very low cost.
- ⦿ The customer's product/tooling spending would be lower. It would be more efficient to collaborate.
- ⦿ Since our group has a foundry and a machine shop under one roof, sample/production lead times are shorter.
- ⦿ To meet consumer demands, "SRK" will invest in exclusive facilities.

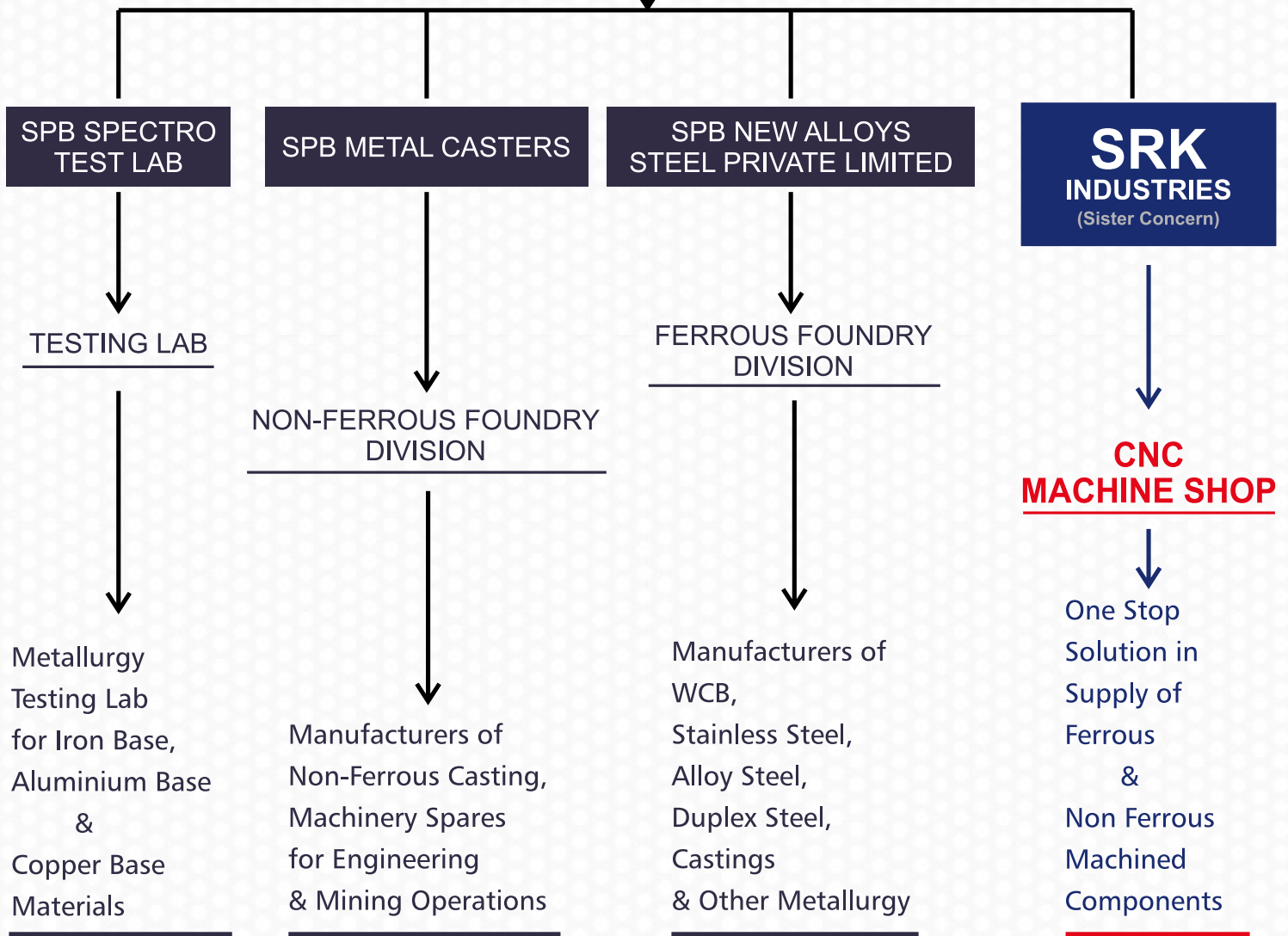
Our Strength

- ⦿ Castings in different grades of steel and alloy steel can be produced in our foundry division.
- ⦿ With its own machine shop and component manufacturing, the company is well-equipped.
- ⦿ Technical team that is dedicated and highly motivated, with expertise in casting manufacturing and machining.
- ⦿ To meet customer demand, SRK can invest in additional facilities.

OUR VISION

SRK Industries are to be recognized as the leading single source supplier of High Integrity Castings and Machined Components for the worlds most demanding applications.





Your First Step To A Quality Casting

We have a fully equipped in-house Pattern Shop and CAD design capabilities with trained Pattern Makers for pattern manufacturing, methoding, mounting, reconditioning, and rework.

We have enough storage space for customer patterns that can be traced using the pattern code, and you can keep track of your customer's drawings and patterns.

The pattern or tooling manufacturing stage is the first and most important step in our process. Designing patterns and castings is critical to improving our manufacturing process. We devote a significant amount of time to ensuring that patterns are created and planned specifically in order to accomplish this.

Despite the fact that we do not design products, we are still looking for ways to influence casting design and thus make the transition from concept to production easier. When CAD models are available, we are familiar with most modelling tools and make full use of it.

Within a few weeks of receiving an order, we manufacture prototype wooden and resin equipment (often using rapid prototyping) and first-off castings.

When the original patterns are not available, we often replicate castings using sample casting, which saves money and shortens lead times.

Our pattern makers have a wealth of experience with the Company and a wealth of expertise adhering to high standards of precision and tolerance, which necessitates a detailed understanding of foundry processes and technology.

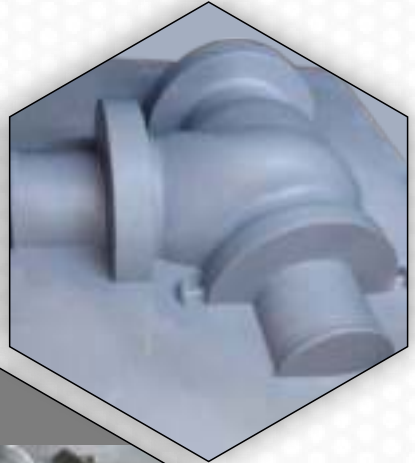
We are committed to fulfilling your exact specifications, whether your castings are simple or complicated, require high volume or low volume use.

To achieve your desired result, our team of pattern makers, engineers, and foundry staff collaborate. Traditional tooling methods can be the best option in some cases.



- Working Table 7 Nos
- Wood Grinding Machine
- Pattern Rework and Methoding & Mounting

PATTERN SHOP



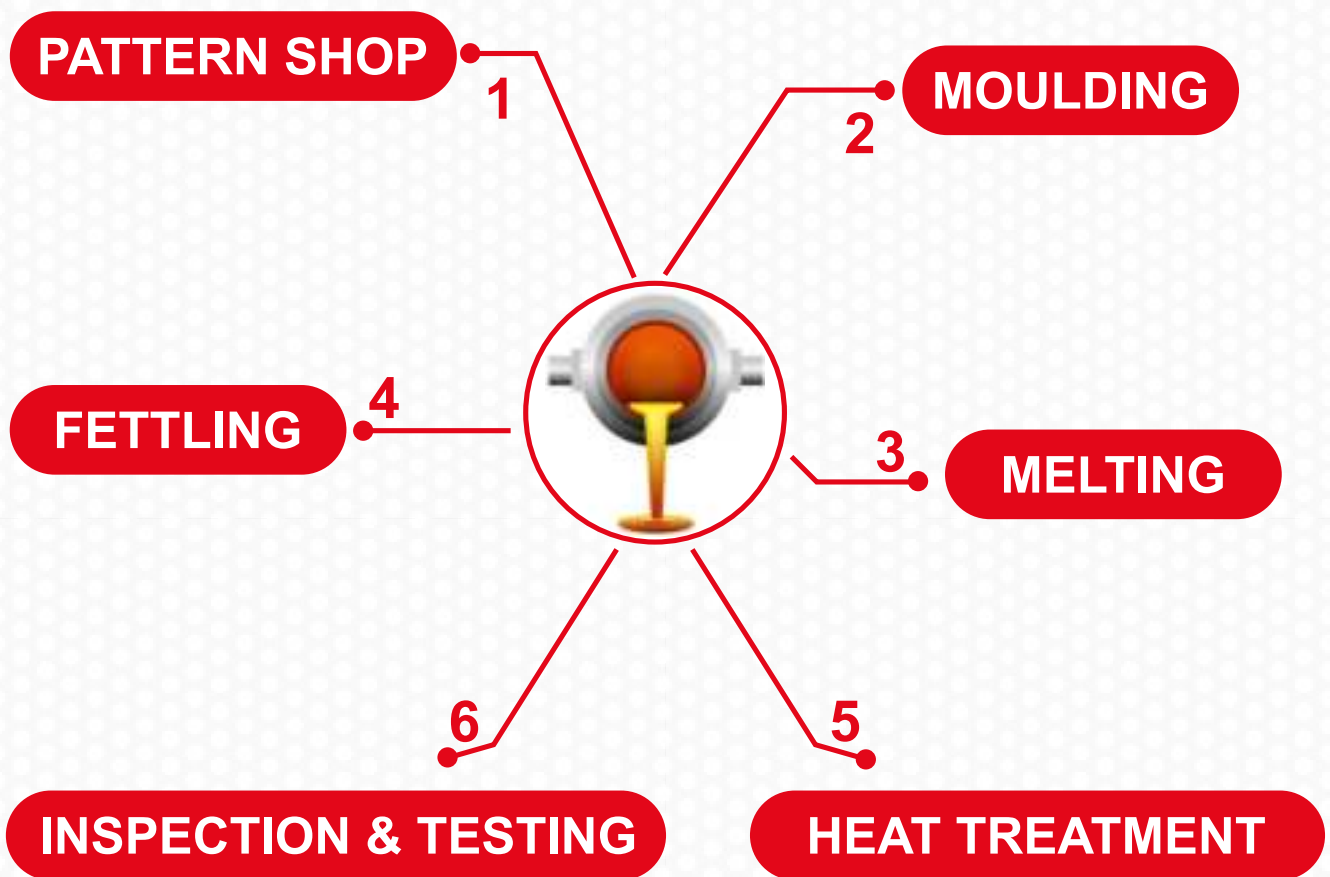
Working Table 7 Nos

Wood Grinding Machine

Pattern Rework and Methoding & Mounting

FERROUS CASTING

STEEL AND ALLOY STEEL FOUNDRY DIVISION



FERROUS CASTING

STEEL AND ALLOY STEEL FOUNDRY DIVISION

Our Parent company SPB New Alloy Steel Private Limited is located at outskirts of coimbatore on NH 209 towards Annur. The annual capacity of the foundry is 2400 MT good casting. . **We have the capability to Manufacture the castings in weight range 15 kg to 2500 kg single piece in Machined and Rough Casting Condition.**

DESCRIPTION & FACILITIES

MELTING

- ✓ Medium Frequency INDUCTOTHERM
- ✓ Induction Furnace
- ✓ Power rating 750 Kw
- ✓ Melting Crucibles - 3000 kg 1 No & 500 kg - 1 No
- ✓ Maximum Weight of the Liquid Metal - 4250 kgs
- ✓ 3 MT Bottom Pouring Ladle - 1 No
- ✓ 600 kg Gear Ladle - 2 No
- ✓ 200 kg Hand Shank - 1 No
- ✓ Lip Pouring Ladles Available to Suit the Requirements
- ✓ Standard and portable pyrometer for temperature measurement

MOULDING

- ✓ Co2 sodium silicate process, denoted (Airset process) & No bake process
- ✓ Sand mixing - muller 500 kgs - 1 No & mixer 250 kgs - 3 No , 50 kgs - 1 No
- ✓ Sand mixing 2MT / Hr
- ✓ Hand moulding box 1000 mm min and 2300 mm max
- ✓ Box moulding , Cake moulding and Pit moulding

HEAT TREATMENT

- ✓ Furnace type - LPG gas fired & Electric
- ✓ Electrically Operated Heat Treatment
- ✓ Capacity 5 MT / 1.5 MT
- ✓ Rate of heating 150/100° Celsius per hour
- ✓ Chamber size - 1.5 MT (18000mm L x 1000mm W x 1000mm H)
- ✓ Chamber size - 5 MT (2800MM L x 1500mm W x 1300mm H)
- ✓ Maximum temperature 1200°
- ✓ 9 Zones
- ✓ PID Controller
- ✓ Computerised paperless recorder
- ✓ Processes - Normalising , Annealing , Solution annealing , Stress Relieving , water Quenching
- ✓ Quenching facilities - 50000 litres water capacity with cooling tower

FETTLING FACILITIES

- ✓ Fettleing Unit with Shot Blasting Machine - 1 No 1 MT capacity
- ✓ Swing Grinders - 2 No
- ✓ Flexible Shaft Grinders - 19 Nos
- ✓ Pneumatic Grinders - 2 No
- ✓ Die grinder - 2 No

CASTING UPGRADATION

- ✓ Welding inverter 600 Amps - 5 No
- ✓ Welding Rectifier 600 Amps - 1 No
- ✓ Electrode preheating Flask oven 120° maintained

NON DESTRUCTIVE EVALUATION

- ✓ Dye penetrate kit - water washable & solvent removable
- ✓ Magnetic particle inspection - MPI 8000 Amps with PROD Technique & AC Yoke
- ✓ Approved sub contractors for radiography

INSPECTION AND TESTING

- ✓ Spectro Maxx Spectrometer
- ✓ Sieve shaker sand testing
- ✓ 27 elements including Nitrogen for Iron Base, Nickel Base and Copper base
- ✓ Electronic Universal Testing Machine - 40 tons capacity
- ✓ Impact Testing Machine
- ✓ Brinell Hardness Testing Machine
- ✓ Magnetic Field Testing
- ✓ Portable hardness tester & shear pin hardness tester
- ✓ NDT (Level II Qualified personal in RT, UT, MT, PT and VT)

MATERIAL HANDLING AND OTHER EQUIPMENTS

- ✓ EOT Crane 10 MT - 1 No
- ✓ Overhead Crane 7.5 MT - 1 No
- ✓ Overhead Crane 5 MT - 3 No
- ✓ Overhead Crane 3 MT - 1 No
- ✓ Mobile crane - 12 MT
- ✓ 30 HP Compressors - 2 no
- ✓ Standby power Genset - 500 KVA - 1 No
- ✓ Muffle furnace available



PRESSURE CL RATING

- ✓ Minimum 150 Class
- ✓ Maximum 5000 Class

OUR CAPABILITIES

- ✓ Minimum weight - 15 kg
- ✓ Maximum weight - 2500 kg
- ✓ Supply condition - Unmachined / Machined



METALLURGY

Stainless Steel / Low Alloy, Copper Base / Non Ferrous and Carbon / Low Alloy Steels are among the 100 alloys we pour. This broad range provides the versatility and variety you need in your casting for material strength, corrosion resistance, hardenability and other factors.

Our Castings Can Be Delivered Based On Standards Like ASTM/ASME /DIN EN MATERIAL Specifications And Our Metallurgy Includes

CARBON

ASTM A 216 Gr : WCB, WCC
ASTM A 148 Gr : 80/50, 105/85
DIN EN 10213 : 1.0619, 1.0625
DIN 17182 Nr : 1.1120
SEW 520 Nr : 1.6759
DIN 1681 : GS 38
IS 2644 Gr II, IS 2707 Gr II, IS 2708 Gr I,
IS 2708 Gr II, IS 1030 Gr : 230 450 W

STAINLESS STEEL :

ASTM A 351 Gr :CF3, CF8, CF8C, CF8M, CF3M,
CN7M, CF10, CG3M, CG8M, CN3MN, CK3MCuN
ASTM A 743 Gr :CA28MWV
DIN EN 10213 : 1.4308, 1.4408, 1.4409, 1.4552,
1.4581, 1.4539

DUPLEX STEEL

ASTM A 890 Gr : CD4MCu, CD3MN (4A),
CD3MCuN (1C), CE3MN (5A),
CD3MWCuN (6A)
ASTM A 995 Gr : CN3MCu, CD3MWCuN (6A)
DIN EN 10213 : 1.4470

NICKEL ALLOY

ASTM A 494 Gr : CW12MW, CZ 100, M35 1,
M 30 H, CX2MW, CU5MCuC, CW6MC, CY 40 Cl:2

LOW ALLOY STEEL

ASTM A 487 Gr : 4A, 4C, 4D, 9C
ASTM A 757 Gr : D1 Q2
ASTM A 352 Gr : LCB, LCC, LC3, LC1
ASTM A 217 Gr : WC1, WC6, WC9, C5, C12, C12A
DIN EN 10213 :1.6220 , 1.7357
EN SEW 685 :1.1138

PRECEIPITATED HARDENED

ASTM A 747 Gr : CB7Cu 1

MARTENSITIC SS

ASTM A 217 Gr : CA15 , CA 40
ASTM A 487 Gr : CA6NM
ASTM A 352 Gr : CA6NM

The above are some common grades, but are not limited, Any equivalent grades in ASTM/ASME /DIN EN standards can be produced.

NON FERROUS CASTING

Our Non Ferrous Foundry Division is capable of supplying gun metal, phosphor bronze etc castings.

We are one of the trend setters in supply of mould press assembly and Tuyere Assembly used in smelters. our production facilities includes 750 kg tilting furnace and 160 kg pit furnace

We are one of the major suppliers of non ferrous items such as gun metal bushes, phosphor bronze items to navaratna company Neyveli Lignite Corporation

Our unit is well equipped with start of the art machine shop having both conventional as well modern CNC machines .

CASTING PROCESS

Sand Mould Process

The lower cost pattern and material Sand Mould Process, forms moulds by using a high-density, hard-packed casing of chemically bonded sand. The process, adaptable to large or small quantities, uses a hydraulic hard-sand-packing method to improve the casting standards of accuracy and finish, while still maintaining mould flexibility for almost unlimited sizes, weights and heights. Sand moulding can be used with most non-ferrous metals and is adaptable to large or small casting quantities.

Features

- Low Pattern & Material costs
- Almost no limit on size, shape or weight of part
- Adaptable to large or small quantities



FOUNDRY WITH FULL SERVICE MACHINING FOR CASTINGS

MACHINE SHOP

Our Machine shop is well equipped with the latest state-of-the-art high technology CNC Machines imported from Taiwan, Korea and Germany. Our infrastructure includes Vertical Machining Centre, Double Column Machining Centre, Vertical Turning Centre, Horizontal Turning Lathe, Drilling and Boring Machines & so on. With the high end infrastructure, we are able to supply precision machined components ideal for small, medium and large industries.

Full Service Machining For Castings

- Full-service, on-site machine shop
- Capabilities to machine a wide range of alloys
- Capabilities to machine large castings, up to 10,000 Kgs
- Cutting-edge machining equipment
- Able to meet tight tolerance requirements

Machined Castings

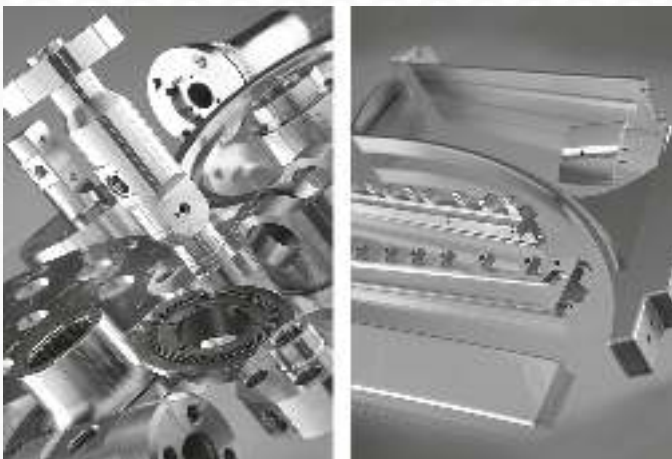
Our skilled machinists provide machined castings for:

- Valve Bodies
- Casings
- Impeller
- Oil field Equipments
- General Engineering Components
- Wear Components
- Other Specialty Components

Tolerances/Dimensions

Tight tolerance requirements can be met for your most critical components.

When your casting applications demand machining to tight tolerances, you need a partner you can rely on to provide consistent high quality, part after part.





**Double Column Machining Centre
Model SW320**

X, Y, Z Travels : 3100mm x 2000mm x 920 mm
Table Size : 3000 mm x 1830 mm
Max. Load : 10 Tons
Overall Weight : 21 Tons
Tool Pocket : 20 Nos
Max. RPM : 6000
Make : Hartford, Taiwan
Type : CNC



**Vertical Machining Centre
Model HCMC -1270AG**



X, Y, Z Travels : 1270mm x 650mm x 630 mm
Table Size : 1270 mm x 650 mm
Max. Load : 1.2 Tons
Overall Weight : 8.5 Tons
Tool Pocket : 24 Nos
Max. RPM : 8000
Make : Hartford, Taiwan
Type : CNC

**Vertical Turning Centre
Doosan Puma VT1100**

Max. Turn Length : 1000mm
Max. Turn Dia : 1100mm
Max. Load : 7.5 Tons
Overall Weight : 22 Tons
Tool Pocket : 12 Nos
Max. RPM : 850
Spindle Chuck : 32"(812.8mm)
Make : Doosan, Korea
Type : CNC



Vertical Machining Centre Doosan DNM 5700

X, Y, Z Travels : 1050mm x 570mm x 510mm
Table Size : 1300mm x 570mm
Max. Load : 1 Tons
Overall Weight : 7 Tons
Tool Pocket : 30 Nos
Max. RPM : 8000
Make : Doosan, Korea
Type : CNC



Vertical Machining Centre Doosan DNM 6700

X, Y, Z Travels : 1300mm x 670mm x 675mm
Table Size : 1500mm x 670mm
Max. Load : 1.3 Tons
Overall Weight : 8.5 Tons
Tool Pocket : 30 Nos
Max. RPM : 8000
Make : Doosan, Korea
Type : CNC



Vertical Turning Centre Doosan Puma V400

Max. Turn Length : 461mm
Max. Turn Dia : 496mm
Max. Load : 750Kg
Overall Weight : 6 Tons
Tool Pocket : 12 Nos
Max. RPM : 3000
Spindle Chuck : 12" (304.8)
Make : Doosan, Korea
Type : CNC





Vertical Machining Centre Model VMX 42E.

Specification (Bed size) - 1200 x 600 x 600
Make - HURCO, Taiwan
Type - CNC



Horizontal Turning Centre

Specification : Spindle Dia : 265 mm
Bed Length : 700 mm
Make - LMW, India
Type - CNC

Vertical Turning Centre - Model VT 550

Specification: Swing dia - 750 mm,
Max turning dia - 650mm,
Max turning length - 750mm,
Make - Hwachaeon, Korea | Type - CNC



FOUNDRY WITH FULL SERVICE MACHINING FOR CASTINGS

MACHINE SHOP

Our skilled machinists provide machined castings for:

- Valve Bodies
- Casings
- Impeller
- Oil Field Equipments
- General Engineering Components
- Wear Components
- Other Specialty Components



Machining Capabilities

- Machining for castings up to 1300 mm turning diameter.
- Machining for castings up to 900 mm height.
- Machining for castings weighing up to 10 tons.



PRODUCTS

We expertise in the production of high quality castings in an array of classes and material grades for various industries. We Welcome challenges and willing to go to the extra mile to develop new products and tailor made solutions based on customer requirements.

Contact us on : info@srk-industries.com to find out how we can work with you to be your value added supplier.

Valve Type	Component Description	Range
Wedge Gate Valve	Body, Bonnet, Wedge, Yoke	Casting Single Piece Weight Up To 2000 Kgs Pressure Rating # 150 To # 3100
Knife Gate Valve	Body, Gland Follower	Casting Single Piece Weight Up To 1750 Kgs Pressure Rating # 150 To # 3100
Check Valve	Body, Disc, Cover, Hinge Bracket	Casting Single Piece Weight Up To 1750 Kgs Pressure Rating # 150 To # 3100
Knife Gate Valve	Body, Gland Follower	Casting Single Piece Weight Up To 1750 Kgs Pressure Rating # 150 To # 3100
Globe Valve	Body, Disc, Bonnet	Casting Single Piece Weight Up To 2000 Kgs Pressure Rating # 150 To # 3100
Ball Valve	Body, Adaptor (End Connector), Ball, Stem housing, Trunnion plate	Casting Single Piece Weight Up To 2000 Kgs Pressure Rating # 150 To # 1500
Plug Valve	Body, Plug, Cover	Casting Single Piece Weight Up To 2000 Kgs Pressure Rating # 150 To # 2500
Control Valve	Body, Disc, Cover	Casting Single Piece Weight Up To 1750 Kgs Pressure Rating # 150 To # 2500
Butter Fly Valve	Body, Disc	Casting Single Piece Weight Up To 2000 Kgs Pressure Rating # 150 To # 3100
Oil Field Equipments	FBV Body, Choke, Tubings Pool, Bonnet	Casting Single Piece Weight Up To 2000 Kgs Pressure Rating Up To # 10000
Cast Steel Fittings	Full Flow, Tee, Elbow, Cross	Casting Single Piece Weight Up To 2250 Kgs Pressure Rating # 10000
Earth Moving Equipments	Tooth Point, Side Cutter, Jaw Plate., Etc	Casting Single Piece Weight Up To 2500 Kgs
Cement Plant Machinery Equipments	Ball Mill Assembly Bearing Housing, Etc.,	Casting Single Piece Weight Up To 2500 Kgs
Mining Industry Equipments	Tuyere Assembly Castings., Etc	Casting Single Piece Weight Up To 2500 Kgs

OUR ACHIEVEMENTS

Our Products range from 2" to 36" and pressure rating from #150 to #3100. Based on our engineering strengths, we can also manufacture castings as per customer requirements and specification with faster deliveries.

TYPE	SIZE	WEIGHT
Gate Valve	28" #300	2260 Kgs / piece
Gate Valve	22" #900	1481 Kgs / piece
Knife Gate Valve	52" #150	1780 Kgs / piece
Butter Fly Valve	40" #600	2700 Kgs / piece
Globe Valve	12X8" #600	1400 Kgs / piece
Check Valve	20" #150	1200 Kgs / piece
Check Valve	20" #150	1200 Kgs / piece
Check Valve1	12" #2500	1033 Kgs / piece
Ball Valve	20" #600	800 Kgs / piece
Plug Valve	24"#150	816 Kgs / piece
Well Head Equipment	203/4 " #3000 X 135/8 #5000 psi	1230 Kgs / piece
Angle Valve	24" #300	2112 Kgs / piece
Anode Core Head For Smelter Plants	1294mm L X 960mm W X 235mmThk	1900 Kgs/ piece
Windmill Rotor Shaft Hub	1650 L	1540 Kgs / piece
Fly Wheel	Dia 1850	2350 Kgs / piece



PRODUCT GALLERY

CASTINGS

Sizes: 2 inches to 36 inches

Class: Pressure rating # 150 to # 3100



Ball Valve
30" 150 LBS Body



Globe Valve
18" 300 FL Body



Butterfly Valve
30" K Lock Disc



Check Valve
16" 150 Check Valve Body



Check Valve
6" 1500 Check Valve Body



Waffer Valve
20" 150 Body



**Mani Fold
- Elbow**



Slurry Valve
DN 450 Cl. 150 Angle Valve Body



Gate Valve
3 3500 WGV Body SPL



Globe Valve
6" 1500 FL Body



Globe Valve
8" 300 FL Body



Globe Valve
4" 2500 Y Globe Body



Gate Valve
14" 2500 Body



Bonnet



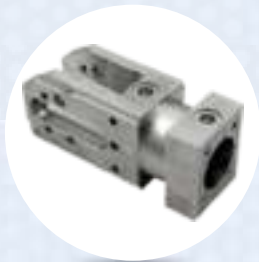
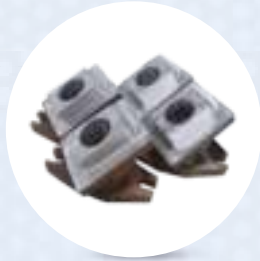
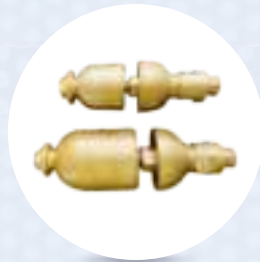
Globe Valve
18" 600 FL Body



Gate Valve
DN50/DN50 (2"/2") BODY

PRODUCT GALLERY

MACHINED COMPONENTS



INDUSTRIES WE CATER

- Valve & Pumps
- Oil & Gas
- Refining & Petrochemicals
- Power & Wind Energy
- Defense & Aerospace
- Mining & Earth Moving
- Sugar & Cement Plants
- Automotive & Engineering Equipments
and Many more...

CUSTOMERS TO NAME A FEW





CNC MACHINE SHOP

Factory

S.F. No : 108/3A-1, DVP Industrial Estate,
Chinnavedampatti, Ganapathy (Po).,
Coimbatore - 641 006. Tamilnadu, INDIA.

☎ +91 95974 97444

✉ info@srk-industries.com

Office

S.F. No : 10/3B, Part DVP Industrial Estate,
Chinnavedampatti, Athipalayam Road,
Coimbatore - 641 006. Tamilnadu, INDIA.

☎ +91 98428 31340

✉ srkindustries.cnc@gmail.com

NON FERROUS FOUNDRY DIVISION

S.F. No : 10/3, Part DVP Industrial Estate,
Chinnavedampatti, Athipalayam Road,
Coimbatore - 641 006. Tamilnadu, INDIA.

FERROUS FOUNDRY DIVISION

S.F. No : 2/4, B3 & B4, Thelungupalayam Road,
Ellapalayam (Po)., Kariyampalayam Village
Coimbatore - 641 697. Tamilnadu, INDIA.

| CONTACT

AT SRK INDUSTRIES, WE WELCOME CASTING AND MACHINING
ENQUIRIES OF ALL GRADES & SIZES.

For further information about our products and services please do visit our website.

www.srk-industries.com

Write to info@srk-industries.com

